

# PANTONE 2.0

**Wall**  
MARINER GRES



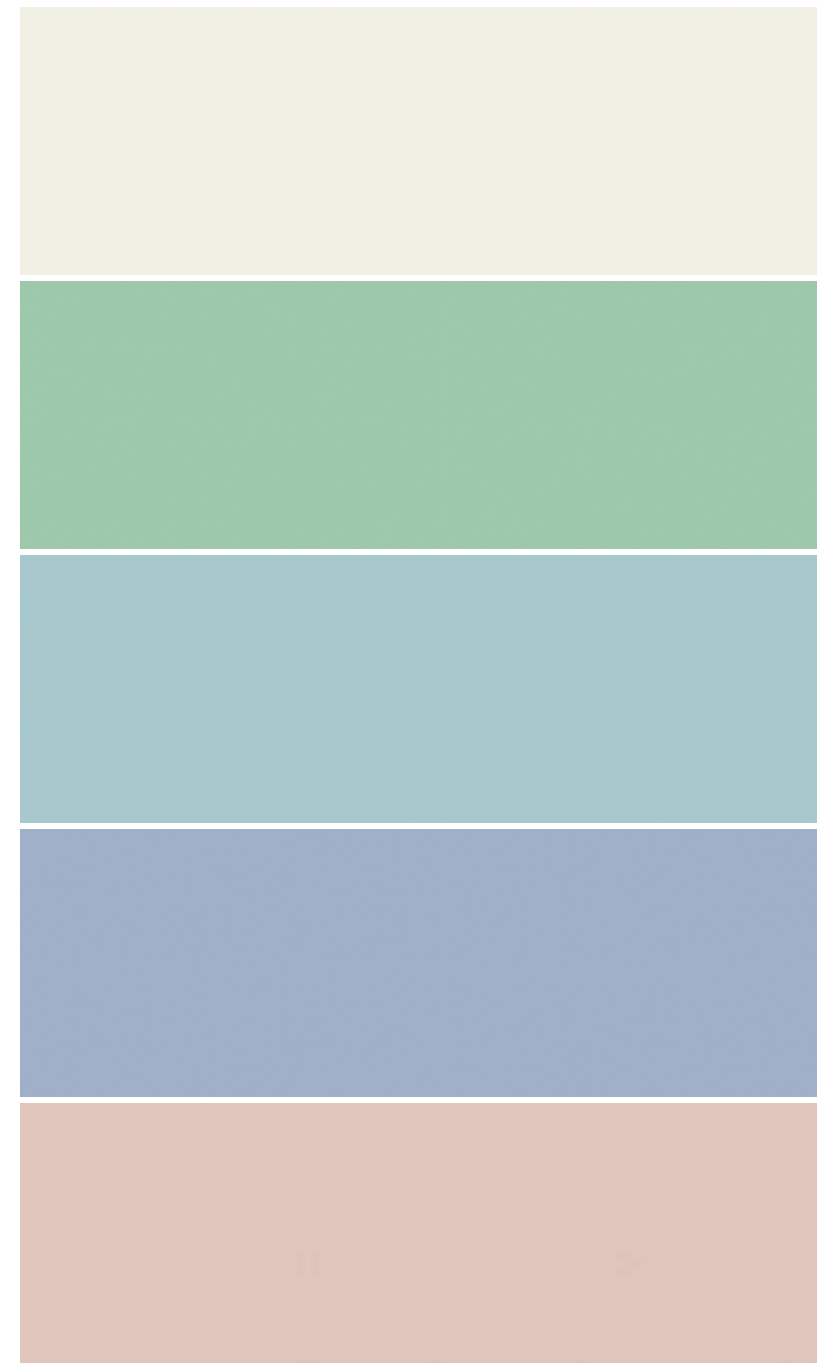


Jungle  
Patch  
Geometric  
Flowers  
Spring

**CINQUE DECORI**  
FIVE DECORS



# PANTONE 2.0



**CINQUE COLORI**  
FIVE COLORS

Panna  
Menta  
Cielo  
Indaco  
Cipria

**GRES PORCELLANATO RETTIFICATO**  
RECTIFIED PORCELAIN STONEWARE



PANTONE 2.0



# CIPRIA

**30x90 cm Rettificato**  
12"x36" Rectified







**SPRING**  
CIPRIA





PANTONE 2.0



# INDACO

**30x90 cm Rettificato**  
12"x36" Rectified







**FLOWERS**  
INDACO





PANTONE 2.0



# PANNA

**30x90 cm Rettificato**  
12"x36" Rectified







**JUNGLE**  
PANNA





PANTONE 2.0



**MENTA**

**30x90 cm Rettificato**  
12"x36" Rectified







**PATCH**  
MENTA





PANTONE 2.0



**CIELO**

**30x90 cm Rettificato**  
12"x36" Rectified







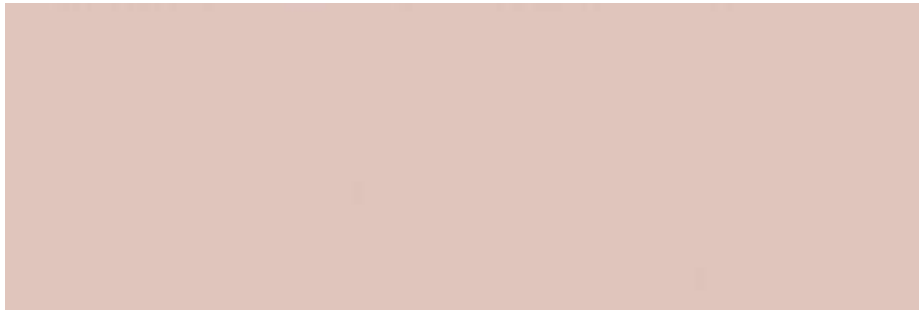
**GEOMETRIC**  
CIELO





# PANTONE 2.0

GRES PORCELLANATO RETTIFICATO / PORCELAIN STONWARE RECTIFIED  
30x90 cm 12"x36" | Spessore / Thickness 8 mm / 0.31"



**1002003** Pantone 2.0 Cipria  
30x90 cm Rettificato / 12"x36" Rectified



**148** **1002011** Pantone 2.0 Spring  
30x90 cm Rettificato / 12"x36" Rectified

**193**



**1002002** Pantone 2.0 Indaco  
30x90 cm Rettificato / 12"x36" Rectified



**148** **1002012** Pantone 2.0 Flowers  
30x90 cm Rettificato / 12"x36" Rectified

**193**



**1002006** Pantone 2.0 Cielo  
30x90 cm Rettificato / 12"x36" Rectified



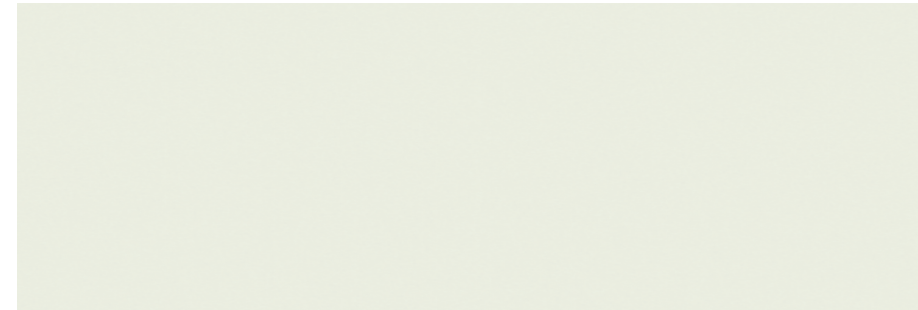
**148** **1002013** Pantone 2.0 Geometric  
30x90 cm Rettificato / 12"x36" Rectified

**193**



# PANTONE 2.0

GRES PORCELLANATO RETTIFICATO / PORCELAIN STONWARE RECTIFIED  
30x90 cm 12"x36" | Spessore / Thickness 8 mm / 0.31"



**1002001** Pantone 2.0 Panna  
30x90 cm Rettificato / 12"x36" Rectified

**148**



**1002009** Pantone 2.0 Jungle (2soggetti)  
30x90 cm Rettificato / 12"x36" Rectified

**193**



**1002004** Pantone 2.0 Menta  
30x90 cm Rettificato / 12"x36" Rectified

**148**



**1002010** Pantone Patch  
30x90 cm Rettificato / 12"x36" Rectified

**193**












# PANTONE 2.0

## CARATTERISTICHE TECNICHE / TECHNICAL FEATURES

Norma Di Riferimento / Specification Reference ISO 13006/EN14411 appendice G Bla GL

Caratteristica tecnica Technical feature	Norma Norm	PANTONE 2.0
 LUNGHEZZA E LARGHEZZA / LENGTH AND WIDTH SPESSORE / THICKNESS RETTILINEITÀ SPIGOLI / STRAIGHTNESS OF SIDES ORTOGONALITÀ / RECTANGULARITY PLANARITÀ / SURFACE FLATNESS ASPETTO / ASPECT	UNI EN ISO 10545-2	CONFORME / IN ACCORDANCE
		CONFORME / IN ACCORDANCE
		CONFORME / IN ACCORDANCE
		CONFORME / IN ACCORDANCE
		CONFORME / IN ACCORDANCE
		CONFORME / IN ACCORDANCE
 ASSORBIMENTO D'ACQUA / WATER ABSORPTION	UNI EN ISO 10545-3	≤ 0.5%
 RESISTENZA A FLESSIONE / FLEXURAL STRENGTH MODULO DI ROTTURA / BREAKING STRENGTH	UNI EN ISO 10545-4	≥ 35 N/mm <sup>2</sup> ≥ 1300 N
 DETERMINAZIONE DELLA RESISTENZA ALL'URTO DETERMINATION OF IMPACT RESISTANCE	UNI EN ISO 10545-5	0,90
 RESISTENZA ALL'ABRASIONE (METODO PEI) ABRASION RESISTANCE (PEI-METHOD)	UNI EN ISO 10545-7	PEI 3 + 5
 COEFFICIENTE DI DILATAZIONE TERMICA LINEARE THERMAL EXPANSION COEFFICIENT	UNI EN ISO 10545-8	(5,7÷5,9) X 10 <sup>-6</sup> /°C
 RESISTENZA AGLI SBALZI TERMICI THERMAL SHOCK RESISTANCE	UNI EN ISO 10545-9	RESISTENTE RESISTANT
 DETERMINAZIONE DELLA DILATAZIONE DOVUTA ALL'UMIDITÀ DETERMINATION OF MOISTURE EXPANSION	UNI EN ISO 10545-10	0,0 mm/m
 DETERMINAZIONE DELLA RESISTENZA AL CAVILLO DETERMINATION OF CRAZING RESISTANCE	UNI EN ISO 10545-11	RESISTENTE RESISTANT
 RESISTENZA AL GELO FROST RESISTANCE	UNI EN ISO 10545-12	INGELIVO FROST-RESISTANT
 RESISTENZA AGLI AGENTI CHIMICI RESISTANCE TO CHEMICALS	UNI EN ISO 10545-13	MIN. CLASS B LB HB
 RESISTENZA ALLE MACCHIE STAIN RESISTANCE	UNI EN ISO 10545-14	MINIMO CLASSE 3 MINIMUM CLASS 3
 RESISTENZA ALLO SCIVOLAMENTO SLIP RESISTANCE	DIN 51130	R9
	DIN 51097	A
	C.o.F B.C.R./D.M. 236 14/6/89	>0,40
	D.C.o.F / ANSI A326.3	>0,42
 REAZIONE AL FUOCO REACTION TO FIRE	96/603/CE	AI <sub>FL</sub> /AI
 GRADO DI VARIAZIONE CROMATICA AESTHETIC CLASSES	ANSI A137.1	VI

FORMATO SIZE	SPESSORE THICKNESS	PEZZI/COLLO PIECES/BOX	MQ/COLLO SQM/BOX	KG/COLLO KG/BOX	COLLI/PALLET BOX/EUROPAL	MQ/PALLET SQM/EUROPAL	KG/PALLET KG/EUROPAL	DIMENSIONE PALLET EUROPAL SIZE
Pantone 2.0 30x90 Fondo Rettificato	8 mm	5	1,35	23,80	48	64,80	1142,40	1210x930mm
Pantone 2.0 30x90 Jungle Rettificato	8 mm	4	1,08	-	-	-	-	-
Pantone 2.0 30x90 Patch Rettificato	8 mm	4	1,08	-	-	-	-	-
Pantone 2.0 30x90 Spring Rettificato	8 mm	4	1,08	-	-	-	-	-
Pantone 2.0 30x90 Flowers Rettificato	8 mm	4	1,08	-	-	-	-	-
Pantone 2.0 30x90 Geometric Rettificato	8 mm	4	1,08	-	-	-	-	-

\* Prezzo al pezzo - vendita tassativa a scatole complete | Price at piece - sale in full boxes only





AZIENDA CON SISTEMA DI GESTIONE  
QUALITÀ CERTIFICATO  
UNI EN ISO 9001:2015

©2023 CERAMICHE MARINER S.P.A. Via Fiandre, 28 - 42014 Castellarano (RE) Italia  
Tel. +39 0536.858266 Fax +39 0536.859779 Email [info@cermariner.it](mailto:info@cermariner.it) [www.cermariner.it](http://www.cermariner.it)